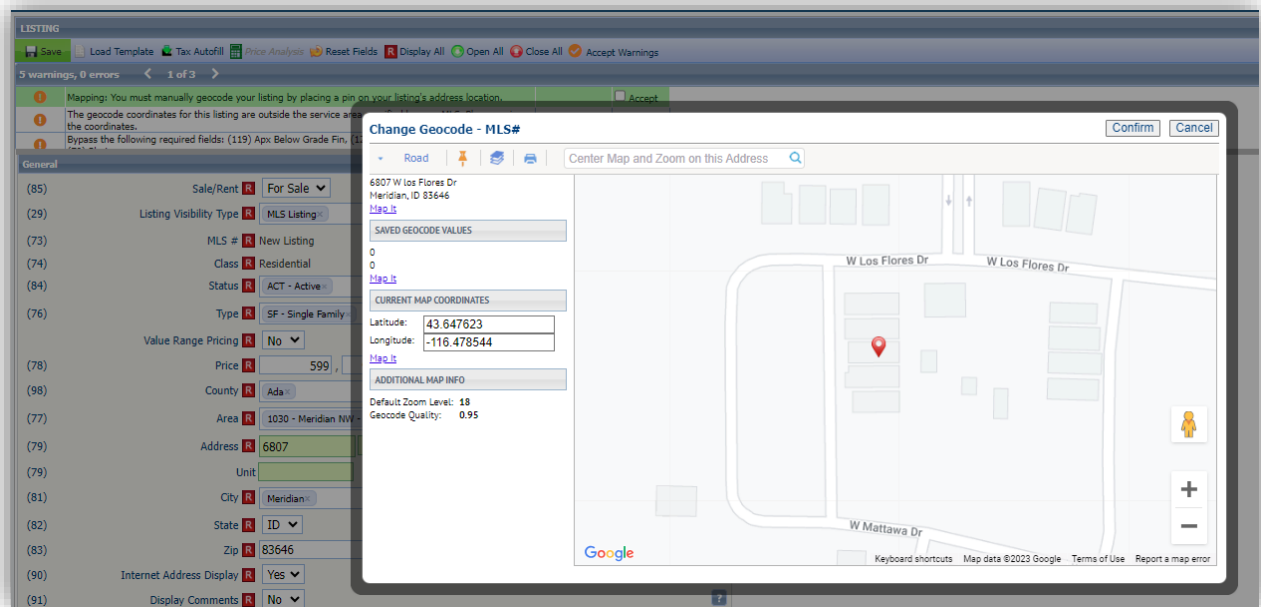

Confirm Map Pin Location for Listings

When adding or editing a listing, if the user is required to manually place the map pin but the auto-generated placement of the pin is correct, the user no longer has to move the pin to save the location to meet the requirement. Users may use the new “Confirm” option to verify that the current map pin placement is correct and proceed with saving the listing. The previous workflow required the user to manually move the pin slightly, even if the auto-generated placement was correct.

Users will continue to have the option to manually move the auto-generated placement of the pin as needed.



Collaboration Center

Collaboration Center – Remove Open House info banner.

To clean up the appearance of the open house information on photos, the Collaboration Center-specific info banner was removed. The banner displayed inconsistently, and if the text watermark was enabled at the bottom of the photo, the banner overlapped the text watermark, causing the appearance of duplicate text. The Open House text watermark information will still display, if enabled, and Open House information will display in the Collaboration Center detail view.

Collaboration Center – Include Secondary email on Seller Email Report

If a contact's record includes the option to include the spouse/secondary email on notifications, the Sell Side > Seller Report will now include that secondary email address in the email notifications.

CONTACT INFORMATION

Save

CONTACT INFORMATION:

Active Inactive

Collab Center Search Options: **New Only** ?

Prefix:

R First Name:

MI:

R Last Name:

Suffix:

Home Email: Primary

Work Email: Primary

Other Email: Primary

Company:

Job Title:

Spouse/Secondary Name:

Spouse/Secondary Email: Primary

Add the Spouse/Secondary to notifications?

SELLER LISTING

Remove Listing View Site

0000 White Pine Flats
Troy, ID 83871
#98752621

[VIEW DETAIL](#)

ENABLED **ENABLE SELL SIDE SITE**
The sell side site provides your seller with a live look at all activity associated with their listing.

[SEND UPDATE EMAIL](#) [VIEW SITE](#)

ENABLED **ENABLE EMAIL REPORT**
This is a summary report sent out in the morning. It recaps all activity related to your seller's listing. The weekly option will be sent on Thursdays.

CLIENT SCHEDULING:
Select the frequency of the seller update emails:

Home **Contacts** x

Contacts **Buyer, Betty** x

CONTACT INFORMATION

- Contact Activity
- Contact Information
- Buyer Activity
- Seller Activity
- CMAs
- More Information
- Messages History**
- Contact Summary

SENT MESSAGES

Forward Delete [BACK](#) [NEXT](#)

Contains Search: Begin **03/18/2023** End **06/16/2023** Search

Manually sent messages retained 90 Days; Automated emails retained 60 Days.

	To	Type	Subject	Da
1	<input checked="" type="checkbox"/> bob_buyer@email.com, betty_buyer@email.com	Auto Email	Your Collaboration Center Seller's Update	6/16/2023 2:05

Page 1 of 1

To: betty_buyer@email.com,bob_buyer@email.com
Cc:
Bcc:
Subject: Your Collaboration Center Seller's Update
Attachments:

Collaboration Center – Improved Agent Photo Handling

Some formatting changes have been made to the handling of the agent image uploaded in Paragon Professional, to improve the display of the image in Collaboration Center. The image size was changed to allow better resolution, and code was corrected that was causing the image to display off center.

Paragon Connect

Corrections and Improvements

- Correction for the Sqft/Acreage field label displayed on the Detail View.
- Correction for listing photos that do not display on Hotsheet results.
- Adjustment to cursor placement when modifying date range values.
- New option to rename existing Hotsheet searches.
- New access to maintain Tours & Open Houses from the Published listing's results view.
- New access to modify personal phone preferences under Settings.
- Correction so Quick Searches saved in Paragon Pro are available within Paragon Connect – My Saved Searches
- Correction to display the Contact photo when displaying unread messages from the Dashboard.
- Correction for improper cursor placement in Date Range fields.
- Correction for setting LVT Frozen Time value for DOM when changing listing status.
- Improvement to always show the Hotsheet Alert icon on the Dashboard, even in mobile view.
- Communication history for comments on listings between the Agent and Consumer is now available from the Contact Summary page. These comments were previously available only from the Dashboard.
- Improvement in the Customize Spreadsheet layout making it easier to find and add new fields to your spreadsheet view.
- Improvement to show full lookup options for enabled Document Types when adding/editing listing Associated Documents.
- Improvement to display existing Room/Unit/Green (RUG) data on the Listing Maintenance form. These fields are not editable but are visible on the form. Support for adding and editing RUG data will be coming soon.
- Improvement to show any Third-Party Integrations enabled for Listing Maintenance under the Published Listings overflow menu.
- Correction for sorting by price on spreadsheet views.
- Correction for Realist Tax Autofill failing to return matched property results.
- Correction for photo changes to reflect proper action in Listing Photo Audit Report.

Driving Directions for Multiple Listings

The Driving Directions option has been expanded to allow support for multiple listings. Driving directions were previously available for a single listing. Users may now select multiple listings on their desktop or mobile device to use Google Maps for plotting directions between listings.

New Near Me Search

Busy agents need super-fast access to find listings when they are out in the field, so we added a new one-click option to find listings near you, wherever you are. On the initial landing page there is a new map icon in the top menu bar that uses your current location to open the map centered on your location and displays listings near you. This search option uses your default multi-Class search form to allow access to all listings. From the map you can use the new Criteria Filter to quickly change your search parameters to find just the right properties you need.

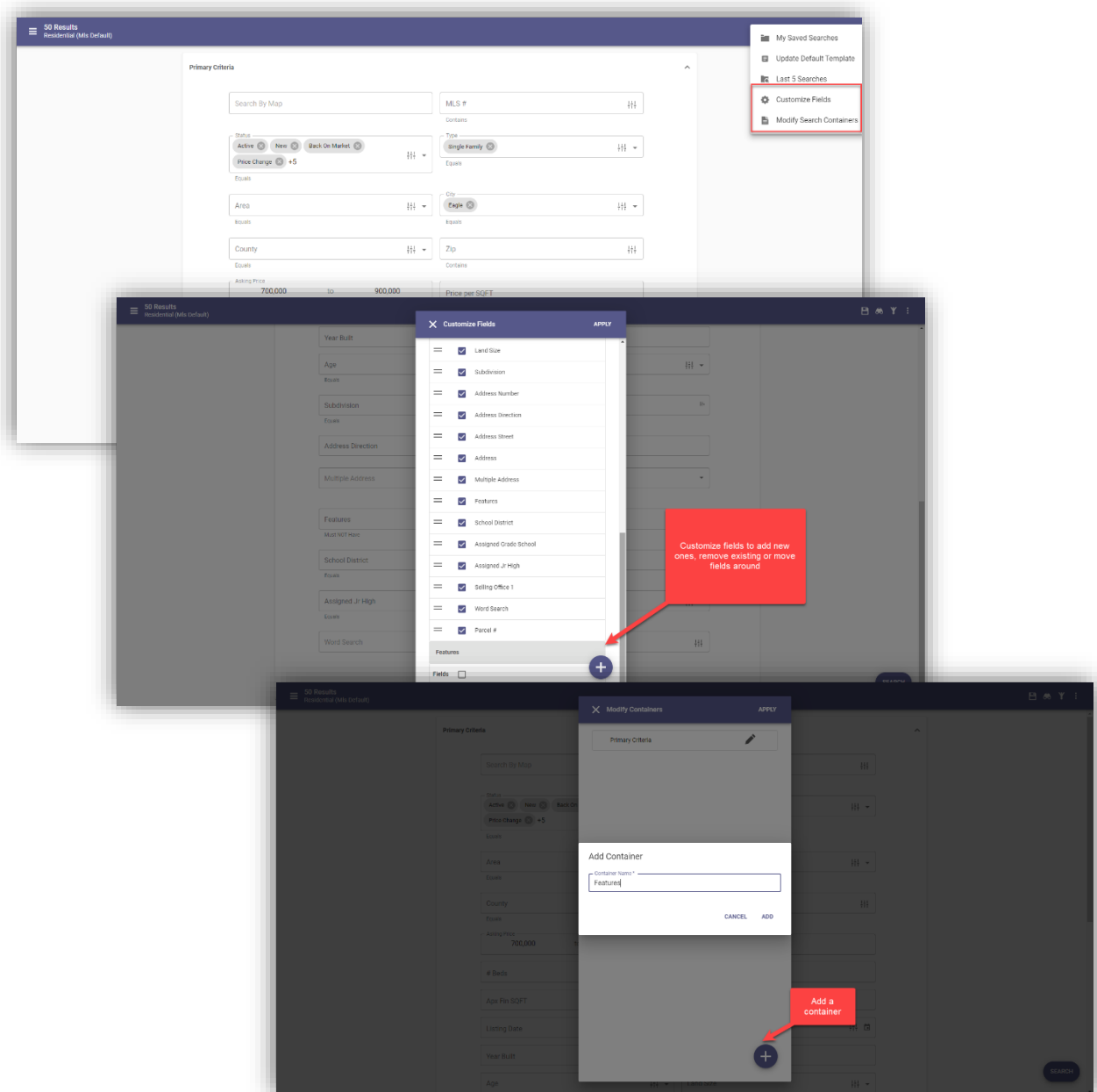
You can also access this new Near Me search option from the Dashboard Quick Actions and from the Properties Search menu.

The image displays two screenshots from a real estate dashboard. The top screenshot shows the dashboard for Jane Washington, a Planner at M.S. Inc. The 'QUICK ACTIONS' section on the left includes a red arrow pointing to 'Listings Near Me'. The 'ACTIVE BUYERS' section shows profiles for Cindy Williams, Sam Johnson, and Brian Stuart. The bottom screenshot shows a map view of a residential area with a 'Criteria Filter' overlay. A red arrow points to the 'Criteria Filter' window, and a red box with text says 'Click on the Criteria Filter to open up the criteria window to apply additional filters'. The 'Criteria Filter' window includes fields for MLS #, Status, Price, Class (set to Residential), Type, Address Number, Address Direction, Address Street, Parcel #, and City. An 'APPLY' button is at the bottom right of the filter window.

Customize Property Search Form

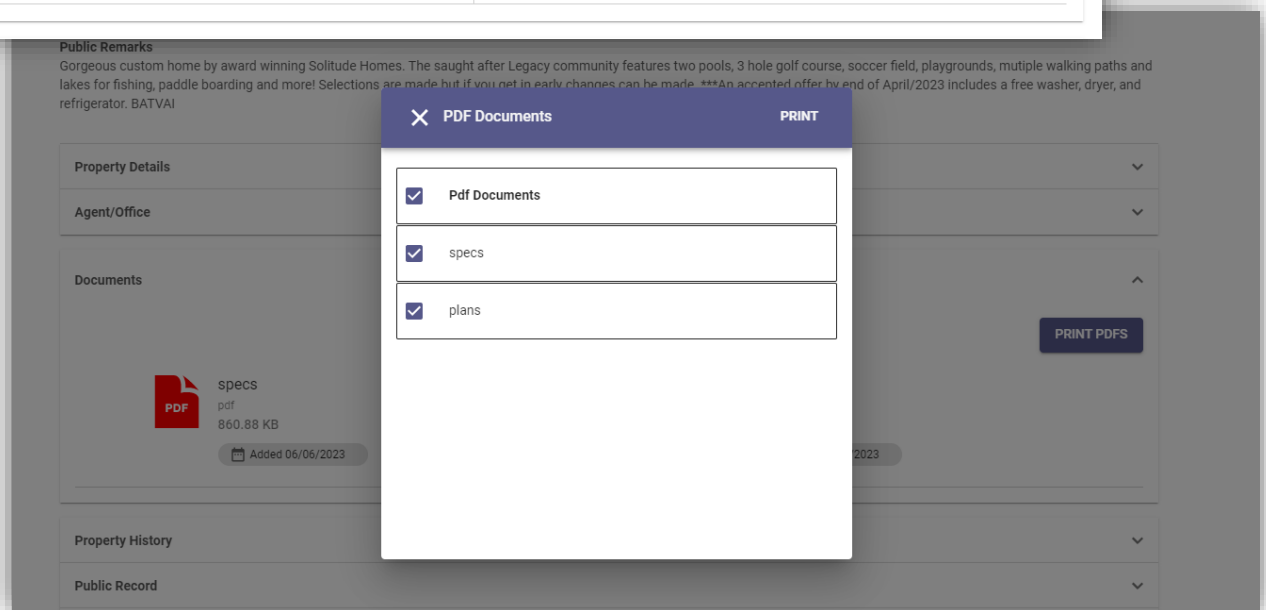
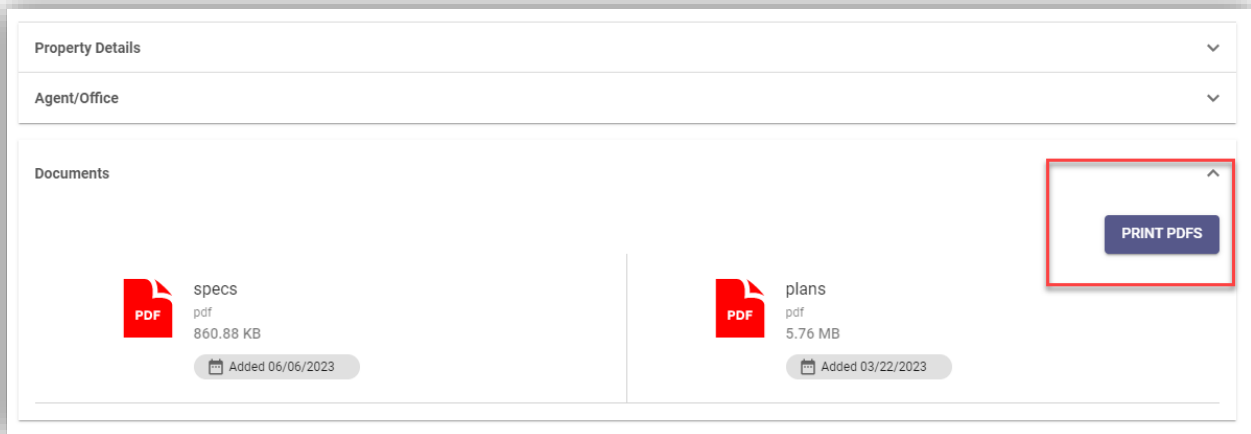
Paragon Connect now allows users to modify the fields used on the property class search forms. Users may choose to customize the Containers and the Fields within each container making it easy to search for any and all kinds of listing data. You can also drag and drop fields from one container to another!

After making any adjustments to the form containers and fields be sure to save as a custom search or use the Update Default Template option if you want access to the new additions going forward.



Print all PDF Associated Documents

When viewing the Listing Detail View there is a section to display all Associated Documents. This section now includes a new option to combine any PDF documents into a single file and allow you to print them all at once. This new Print PDF option does not include any other document types.



Confirm Map Location for New Listings

When adding a new listing, if the exact map location is required and the auto-generated placement of the map pin is correct, the user no longer has to move the pin to save the location to meet the requirement. Users may use the new “Confirm” option to verify the current map pin placement is correct and proceed to publish the new listing. The previous workflow required the user to manually move the pin slightly, even if the auto-generated placement was correct.

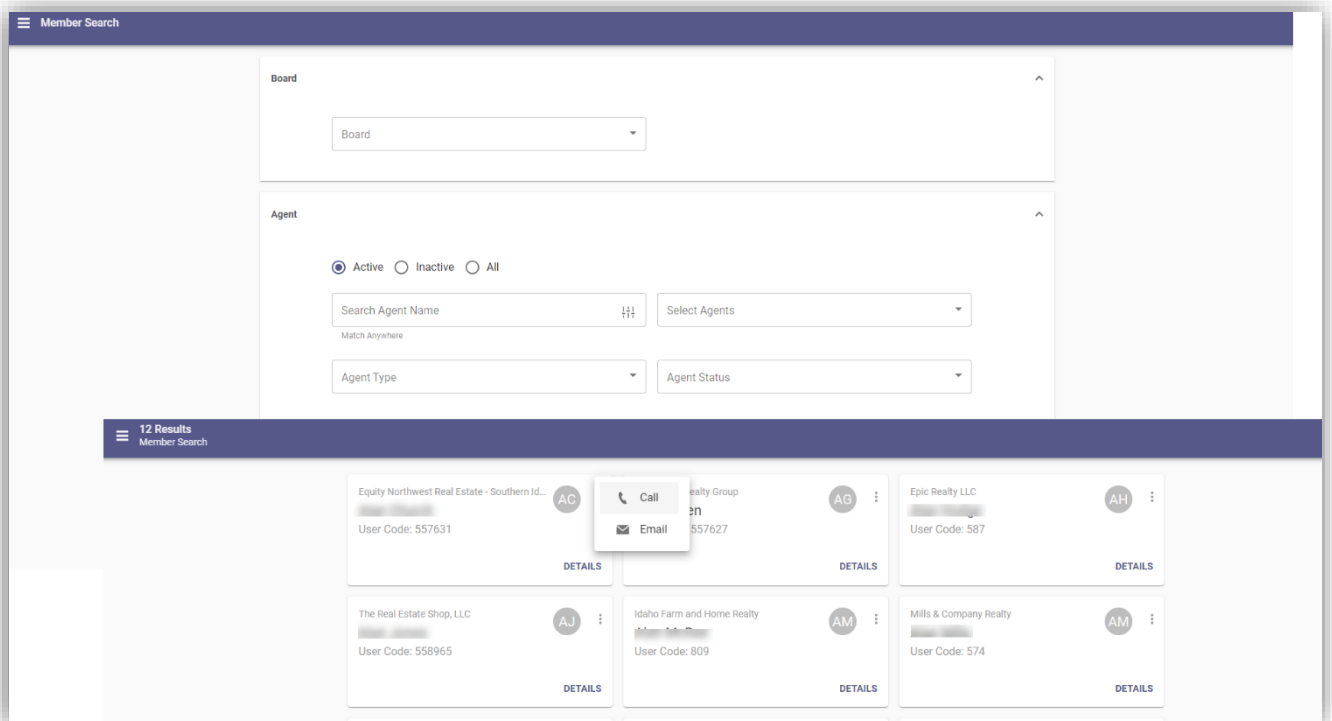
Users will continue to have the option to manually move the auto-generated placement of the pin as needed.

This new confirmation-process is only available when adding new listings.

Membership Search

The Members menu item in Paragon Connect has a brand-new look. Users may search for Agents or Offices similarly to the Roster search functions in Paragon. Results include the option to view Roster Detail reports for agents and offices and include convenient quick links to call and email.

Member Search



Office Search

The image displays a software interface for office search. The top section, titled "Office Search", contains a "Board" dropdown menu and an "Office" section with radio buttons for "Active", "Inactive", and "All". Below these are search filters for "Search Office Name", "Match Everyone", "Office City", and "Office State". A "Select Offices" button is also present.

The search results are displayed in a grid of 10 items, each showing a "Broker" name and an "Office Code". A red arrow points to the "DETAILS" link of the first result (Office Code: 1711).

The detailed view for "RE/MAX Advisors" (Office Code: 1711) is shown below. It includes the following information:

- Board Name:** [Redacted]
- Office Address:** [Redacted] (Suite, # PO Box, Etc.)
- Street Address:** [Redacted]
- City, State, Zip:** Meridian, ID 83642
- Phone:** [Redacted]
- Main:** [Redacted]
- Broker:** [Redacted] (DJ)
- Members:**
 - Realtor: [Redacted] (CL)
 - Associate Broker: [Redacted] (CP)
 - Broker: [Redacted] (DJ)
 - Realtor: [Redacted] (ED)
 - Office Admin: [Redacted] (TT)
 - Realtor: [Redacted] (JB)